



Hotel Riu Plaza España

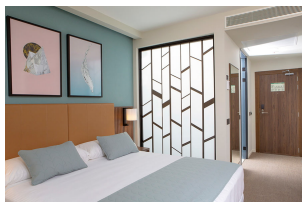
España - Madrid - (Madrid)

C/ Gran Via, 84 - 28013

Madrid Madrid

Tel. 919 193 393

E-Mail: sales.madrid@riu.com



Destacados

Gastrobar "El Edén" and Sky bar located on the 26th floor

Rooftop bar on the 27th floor

Outdoor swimming pool, located on the 21st floor, open in summer

Conference & meeting rooms with capacities for up to 1.500 persons. Total 32,291.73 sq ft (3.000 m²)

Adapted rooms for disabled guests available

Ubicación / Información general

Located in the heart of the city centre of Madrid, "Edificio España" (Spain Building)

20 km from Adolfo Suárez Madrid-Barajas Airport (MAD)

27-storey building

20 m from nearest underground station (Plaza de España)

Underground parking at a charge (limited spaces)

Credit cards accepted: MasterCard, Amex, Visa and Diners

El hotel ofrece

Free WiFi throughout the hotel

Use of computers with Internet access (free of charge)

Concierge service

Room service from 7.00 a.m. to 10.00 a.m. and from 12.00 p.m. to 0.00 a.m. (additional charge)

Restaurant for breakfast

Lobby bar

"El Edén" Gastrobar located on the 26th floor

"360°" Sky bar located on the 26th floor

"360°" Rooftop bar on the 27th floor

Outdoor swimming pool located on the 21st floor, open in summer

Gym with complete range of sports equipment, free of charge

Use of the gym is restricted to guests over 18 years old. Sports shoes are compulsory when using the gym.

Meetings/Events

16 conference and meeting rooms with capacities for up to 1,500 persons.

Total 32,291.73 sq ft (3.000 m²)

Cloakroom service

In-house catering

Wireless Internet

Habitaciones

582 guest rooms

All the guest rooms have:

Desk

Minibar on request (additional charge)

Central air conditioning/heating

Telephone

Free wireless Internet

Bathroom with shower

Bathroom toiletries

Hairdryer

Special make-up mirror

USB power outlet

220 V

Electric kettle (coffee and water, initial complimentary content)

Flat screen satellite TV

Electronic in-room safe

Deluxe King rooms:

From 20 m²

1 king-size bed (180 x 200 cm)

Deluxe King rooms with views:

From 20 m²

1 king-size bed (180 x 200 cm)

Rooms are located on the top floors with views of the city

Deluxe Twin rooms:

From 23 m²

2 beds (110 x 200 cm)

Deluxe King rooms with terrace:

From 23 m²

1 king-size bed (180 x 200 cm)

Terrace

Deluxe Superior King rooms:

From 29 m²

1 king-size bed (180 x 200 cm)

Double washbasin

Integrated lounge area with sofa bed

Deluxe Superior King rooms with views:

From 29 m²

1 king-size bed (180 x 200 cm)

Double washbasin

Integrated lounge area with sofa bed

Rooms are located on the top floors with views of the city

Deluxe Superior Twin rooms:

From 31 m²
2 beds (110 x 200 cm)
Double washbasin
Integrated lounge area with sofa bed

Deluxe Superior King rooms with terrace:

From 26 m²
1 king-size bed (180 x 200 cm)
Double washbasin
Integrated lounge area with sofa
Terrace

Deluxe Family King rooms:

35 m²
1 king-size bed (180 x 200 cm)
Double washbasin
Separate lounge with sofa bed

Deluxe Family Twin rooms:

37 m²
2 beds (110 x 200 cm)
Double washbasin
Separate lounge with sofa bed

Junior Suites with terrace:

From 37 m²
1 king-size bed (180 x 200 cm)
Bathroom with bathtub, additional shower cabin and double washbasin
Bathrobe and slippers
Integrated lounge area with sofa or sofa bed
Terrace

Presidential Suite "De Madrid al Cielo":

1 suite (100 m²)
1 bathroom with bathtub, additional shower cabin and double washbasin
1 bathroom with shower
Bathrobe and slippers
2 bedrooms
1 king-size bed (200 x 200 cm) and 1 king-size bed (180 x 200 cm)
Separate lounge with sofa and dining table
Small kitchen
Guest bathroom
2 terraces, total 60 m², one with whirlpool bath and sun loungers
City views

Gastronomía

Bed and breakfast

Breakfast:

At the main restaurant

Mon-Fr from 7:00 a.m. to 10:30 a.m. and Saturday, Sunday and Bank
Holidays from 7:00 a.m. to 11:00 a.m.

Varied buffet, show cooking
Vegetarian and gluten-free options

Lunch, dinner, snacks (additional charge)

Room service from 7.00 a.m. to 10.00 a.m. and from 12.00 p.m. to 0.00
a.m. (additional charge)

Deportes y entretenimiento

Sports and activities:

Fully-equipped gym, free of charge

Entertainment programme:

Live music or DJ (several times a week)